

## Housing Production Report Delaware Building Permits

### 2000 - 2020 (YTD)

	2000	2001	2002	2003	2004	2005	2006	2007	2008	2009	2010	2011	2012	2013	2014	2015	2016	2017	2018	2019	2020
<b>Single Family Building Permits (Number of units)</b>																					
NCC	1,640	1,646	2,099	1,838	2,027	1,569	1,409	1,183	641	627	542	606	686	898	1,095	1,205	1,311	1,389	1,341	1,375	505
KENT	853	958	1,452	1,766	2,046	2,000	1,511	1,345	824	722	658	630	692	861	923	845	1,127	1,152	1,401	1,196	560
SUSSEX	1,422	1,825	2,514	3,184	3,477	3,589	2,448	2,109	1,375	1,388	1,418	1,573	1,746	2,138	2,085	2,169	2,399	2,727	2,933	2,990	1,359
<b>STATE</b>	<b>3,915</b>	<b>4,429</b>	<b>6,065</b>	<b>6,788</b>	<b>7,550</b>	<b>7,158</b>	<b>5,368</b>	<b>4,637</b>	<b>2,840</b>	<b>2,737</b>	<b>2,618</b>	<b>2,809</b>	<b>3,124</b>	<b>3,897</b>	<b>4,103</b>	<b>4,219</b>	<b>4,837</b>	<b>5,268</b>	<b>5,675</b>	<b>5,561</b>	<b>2,424</b>
<b>Multi-Family Building Permits (Number of units)</b>																					
NCC	691	220	156	594	176	182	319	277	181	169	66	105	304	384	431	780	423	612	220	285	82
KENT	5	60	-	380	132	182	192	139	164	78	135	107	215	76	72	225	152	381	187	147	33
SUSSEX	-	105	110		-	673	625	238	161	167	136	129	258	336	210	260	399	451	356	406	159
<b>STATE</b>	<b>696</b>	<b>385</b>	<b>266</b>	<b>974</b>	<b>308</b>	<b>1,037</b>	<b>1,136</b>	<b>654</b>	<b>506</b>	<b>414</b>	<b>337</b>	<b>341</b>	<b>777</b>	<b>796</b>	<b>713</b>	<b>1,265</b>	<b>974</b>	<b>1,444</b>	<b>763</b>	<b>838</b>	<b>274</b>
<b>Total Production (Number of units)</b>																					
NCC	2,331	1,866	2,255	2,432	2,203	1,751	1,728	1,460	822	796	608	711	990	1,282	1,526	1,985	1,734	2,001	1,588	1,660	587
KENT	858	1,018	1,452	2,146	2,178	2,182	1,703	1,484	988	800	793	737	907	937	995	1,070	1,279	1,533	1,561	1,343	593
SUSSEX	1,422	1,930	2,624	3,184	3,477	4,262	3,073	2,347	1,536	1,555	1,554	1,702	2,004	2,474	2,295	2,429	2,798	3,178	3,289	3,396	1,518
<b>STATE</b>	<b>4,611</b>	<b>4,814</b>	<b>6,331</b>	<b>7,760</b>	<b>7,858</b>	<b>8,195</b>	<b>6,504</b>	<b>5,291</b>	<b>3,346</b>	<b>3,151</b>	<b>2,955</b>	<b>3,150</b>	<b>3,901</b>	<b>4,693</b>	<b>4,816</b>	<b>5,484</b>	<b>5,811</b>	<b>6,712</b>	<b>6,438</b>	<b>6,399</b>	<b>2,698</b>

**DEFINITIONS:**

**Single Family Unit:** One-family freestanding home, condominium, townhouse or row house intended to be sold.

**Multi Family Unit:** Two or more units in the same building sharing a common area of land.

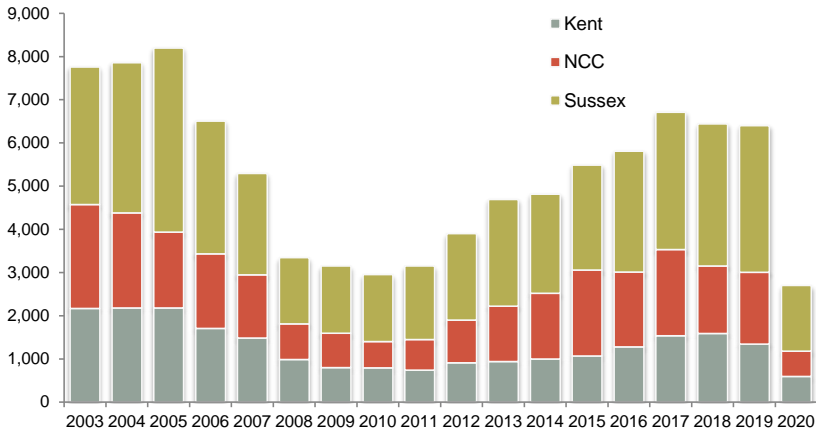
Placement of manufactured homes is not included unless the placement required a building permit.

Source: U.S. Bureau of the Census: <http://www.census.gov/>

## Housing Production Report Delaware Building Permits

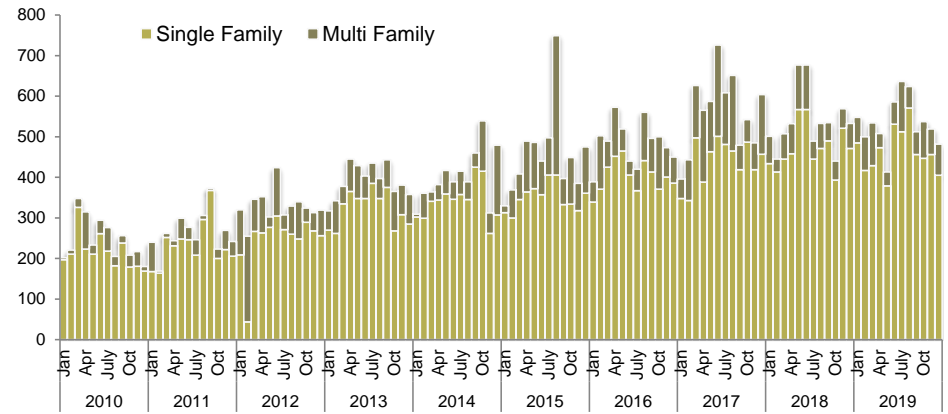
### Delaware Building Permits - Annual by County

Sussex County continues to see the largest percentage of permits issued, hovering around 50% of the state total.



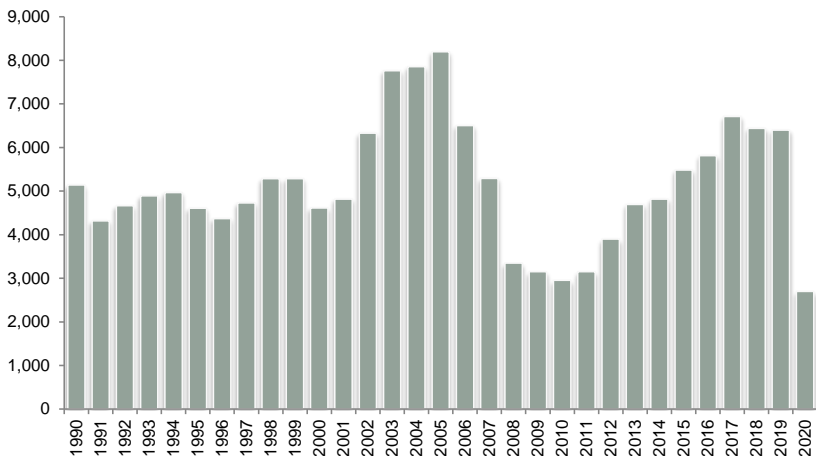
### Delaware Building Permits - Monthly

Total permits are up 5% in 2019, compared to 2018 although multi-family permits are down 36% from the same period in 2018. Single family permits are down 36% for Jan-May 2020 over Jan-May 2019.



### Delaware Building Permits - Annual

Total permits indicated strong growth in CY 2019 reaching a total of 6,399 by the end of December. As of December 2018, 6,438 total permits have been recorded.



### Delaware Multifamily Building Permits

Over time, the percentage of new building permits that are for multifamily units (2 or more units) has trended up, reaching 23.1% in 2015. Multi-family permits as a percent of all permits in Jan-Dec 2019 is 13.1%, a 2% jump from Jan-Dec 2018.

